



Advancing District Scale Gold Projects

Through The Drill
Discovery Phase

Annual General and Special Meeting of Shareholders
December 8, 2023

TSX-V: NEWO



Forward Looking Statements

This presentation may contain "forward-looking information" (as defined in applicable Canadian securities legislation). Generally, these forward-looking statements can be identified by the use of forward-looking terminology such as "plans", "expects" or "does not expect", "is expected", "budget", "scheduled", "estimates", "forecasts", "intends", "anticipates" or "does not anticipate", or "believes", or variations of such words and phrases, or state that certain actions, events or results "may", "could", "would", "might" or "will be taken", "occur", "be achieved" or "has the potential to", and are based on expectations, estimates and projections considered to be reasonable by NewOrigin Gold as of the date of this presentation. Actual results and outcomes may differ materially from what is expressed or forecasted in these forward-looking statements. Such statements are qualified in their entirety by the inherent risks and uncertainties surrounding future expectations. Among those factors which could cause actual results to differ materially are the following: market conditions and other risk factors listed from time to time in our reports filed with Canadian securities regulators on SEDAR at www.sedar.com.

Information in this presentation has been furnished for your information only, is accurate at the time of posting, and may be superseded by more current information. Except as required by law, we do not undertake any obligation to update the information, whether as a result of new information, future events or otherwise.

Please refer to NewOrigin press releases and SEDAR filings for details on technical information and disclosures.

Significant Portfolio of Canadian Shield Gold Projects



Located in Ontario's Prolific Greenstone Belts

- **Sky Lake:** SW extension of the Pickle Lake Gold District, in the same geological terrain as the Red Lake Gold District
- **North Abitibi:** On the Casa Berardi trend in Ontario, 40 km west of the Casa Berardi mine
- **South Abitibi:** Located along the southern margin of the Abitibi Greenstone Belt, prospective for gold, nickel/copper, cobalt/silver and diamonds

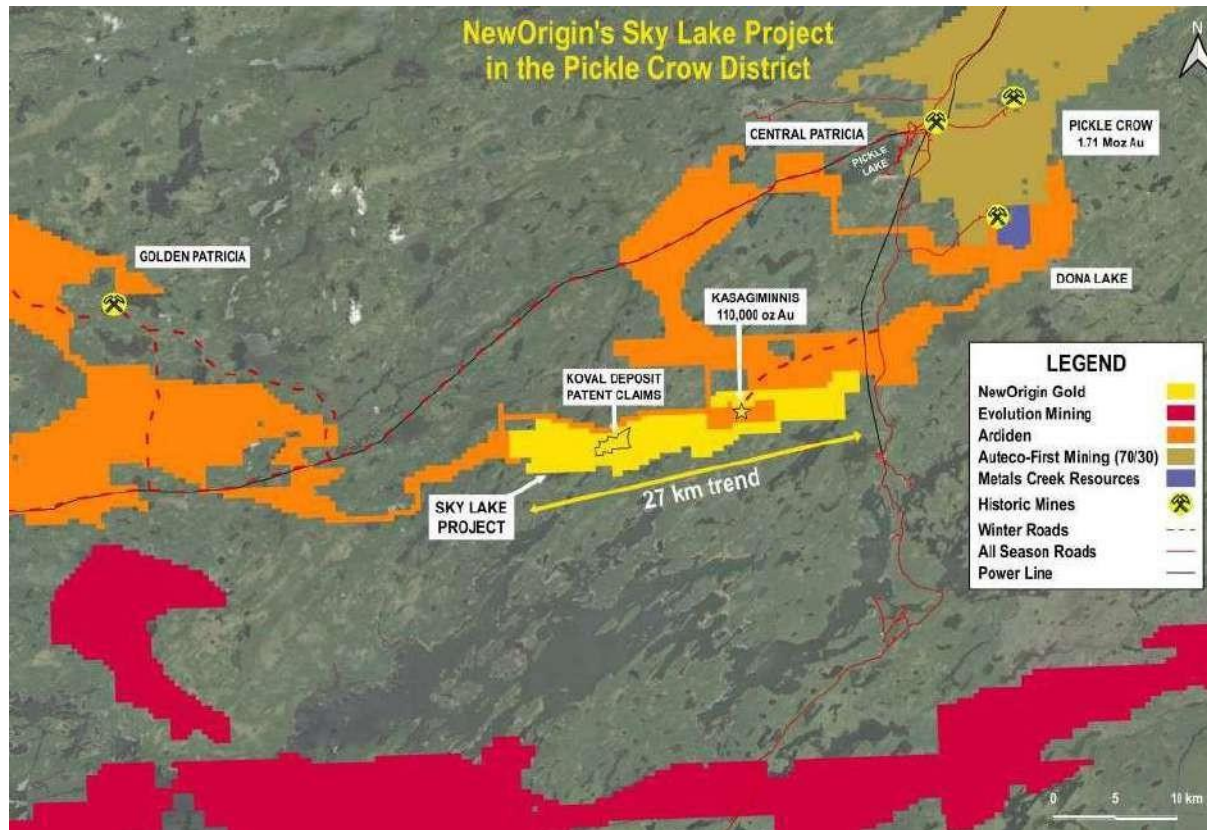
Progress During 2023

2023 was a difficult year for junior resource companies however NewOrigin made progress toward key objectives



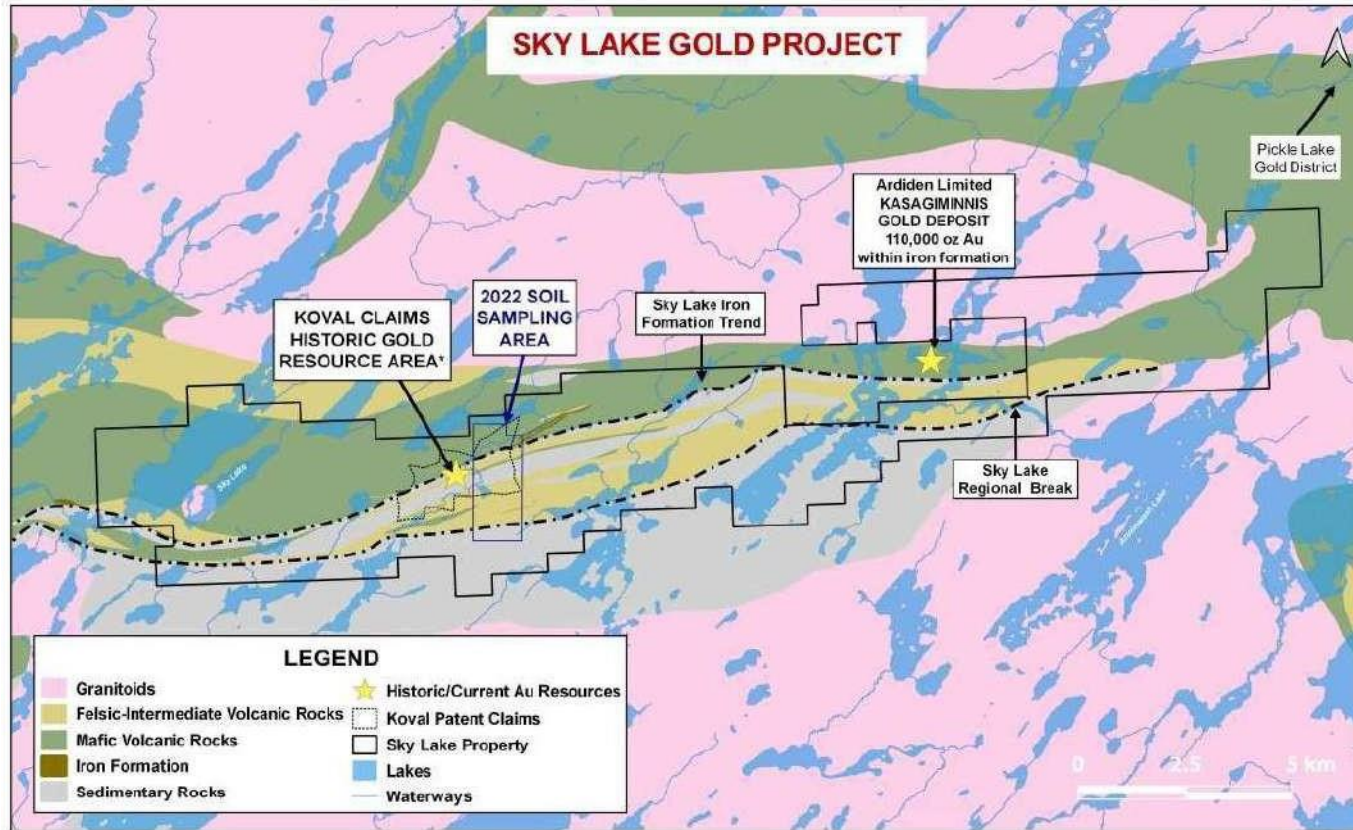
- Geochemical surveying at Sky Lake delineated new drill targets near the Koval deposit
- Extensive Sky Lake NI43-101 technical report completed
- Relationships were strengthened with Mishkeegogamang FN at Sky Lake and a new chief was elected during the year
- Sampling & mapping confirmed potential of Ni/Cu sulphide occurrences at South Abitibi
- Private placement closed during December 2022
- Kinebik property, Que was sold to O3 Mining

Sky Lake – Southwest Extension of Pickle Lake District



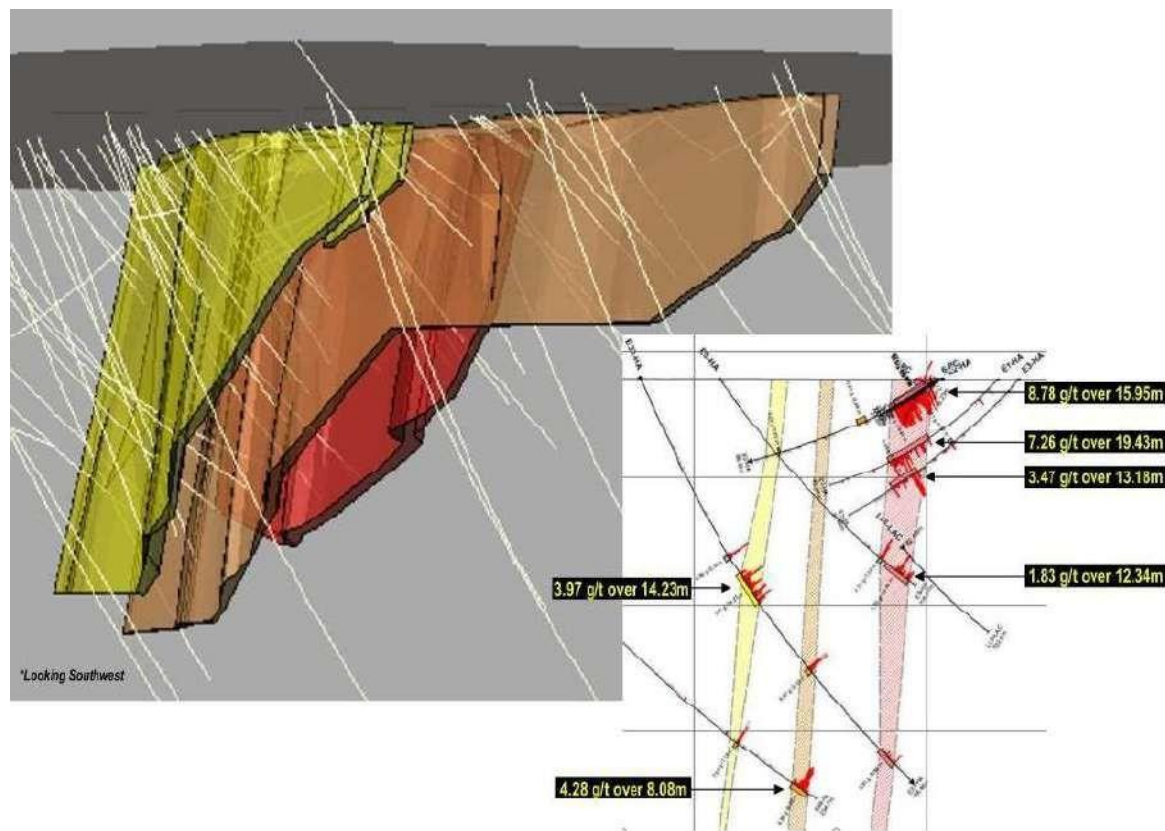
- 100% interest in 9,100 hectares, a 27 km long gold trend
- 30 km southwest of the established mining community of Pickle Lake; commercial airport, heavy equipment, significant hydroelectric infrastructure along paved highway
- In January 2022, NewOrigin acquired 100% interest in the Koval patented mining claims from Barrick Gold
- Auteco advancing Pickle Crow mine into production, Arciden drilling to expand Au resource at Kasagiminnis, Evolution advancing exploration of greenstone belt to the south

Sky Lake – Historic High-Grade Gold Deposit



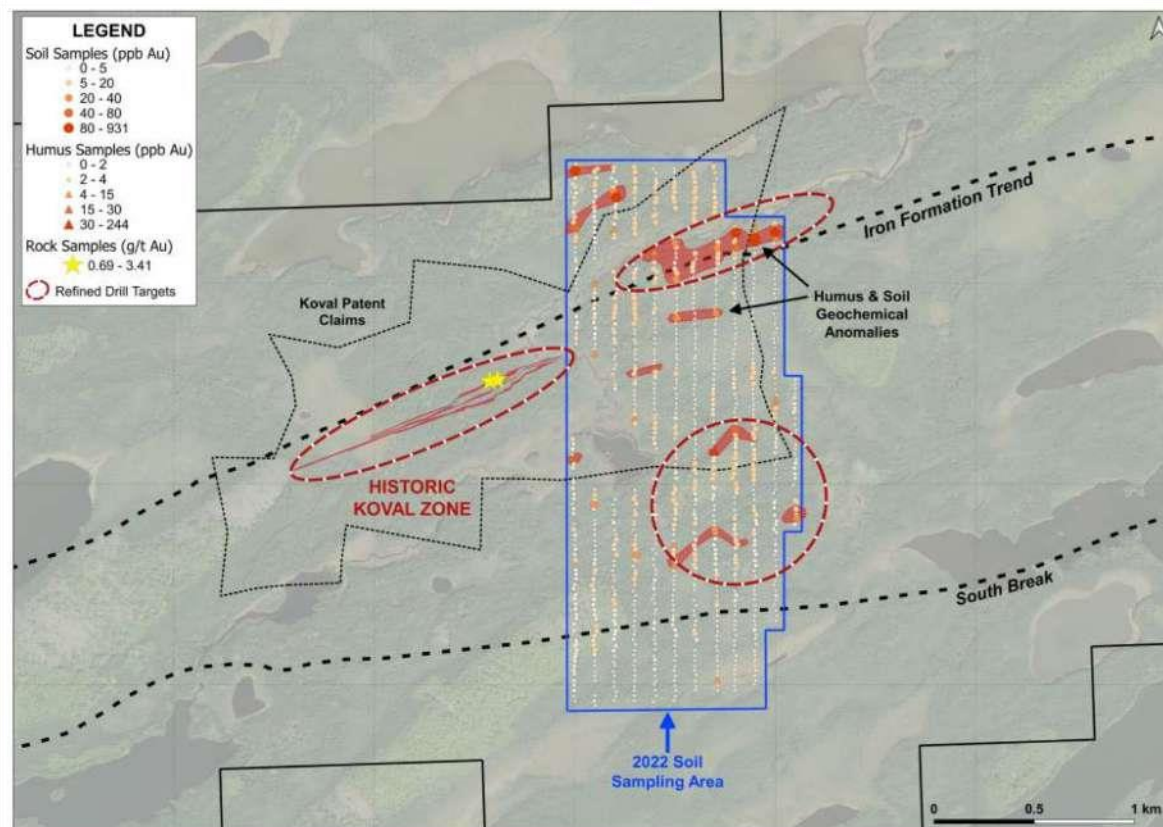
- Koval patented claims host a historic Au deposit discovered in 1950's
- Open at depth and in both directions along strike
- Koval Au deposit & adjacent iron formation targeted for drilling to establish initial Au resource
- Gold occurrences known along 15 km "camp-scale" trend
- Host geologic environment shares important similarities with multi-million ounce gold districts of Quebec & northern Ontario

Sky Lake – Koval High Grade Gold Deposit



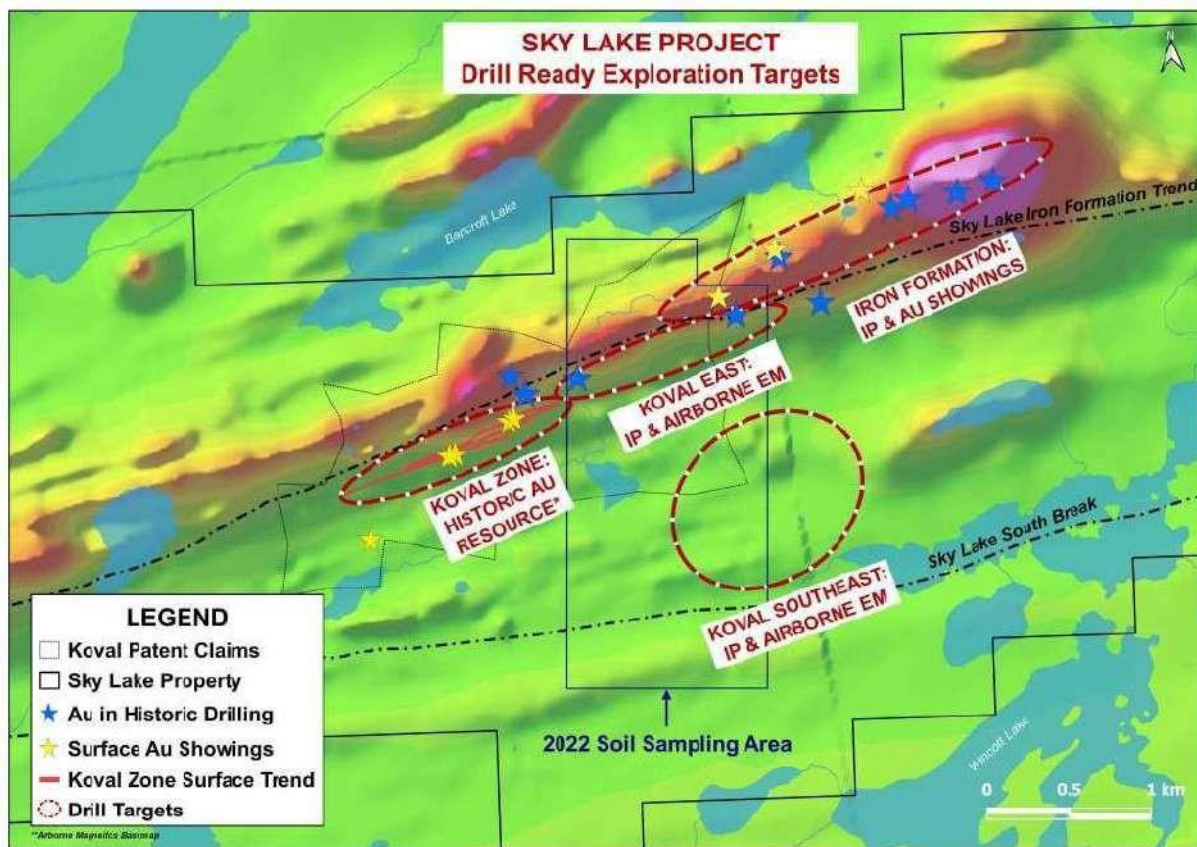
- Near surface drill intercepts at +5 g/tAu over + 10 metres
- No drill testing below 175m vertical depth
- No significant exploration or drill testing since the 1980's
- NewOrigin modelling of 133 drill holes defines 3 sub-parallel zones over >1km strike length
- Targets for extension or repetition of the zones remain untested

Sky Lake – Soil Sampling Humus Results



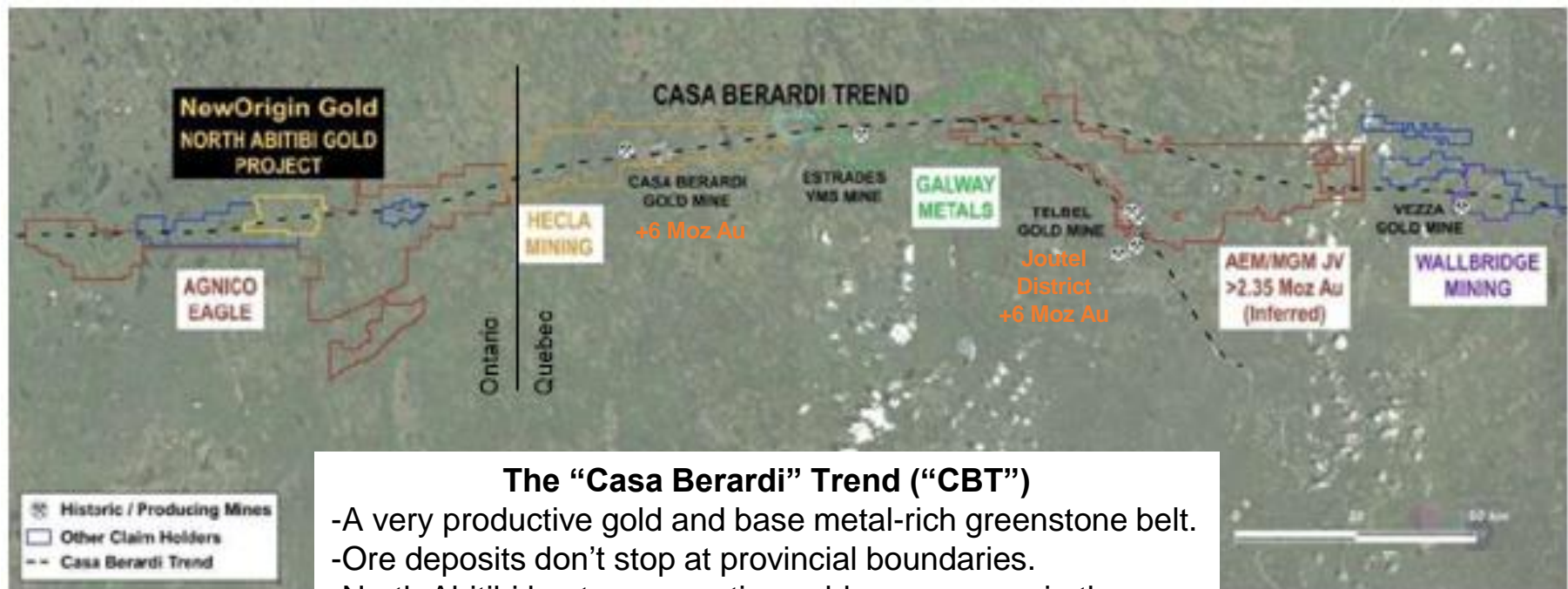
- NewOrigin has modelled a database of over 12,000 geochemical samples at the centre of the Sky Lake property
- In 2022, a total of 574 humus and 450 soil samples were taken along trend east of the Koval deposit
- Humus and soil samples containing anomalous gold & pathfinder elements delineate new target areas to be integrated into upcoming drill programs

Sky Lake – Drill Targeting Koval & Eastern IP Zones



- Drill & exploration permits in place
- NewOrigin has completed 3 IP geophysical surveys including “deep looking” IP over the Koval deposit.
- Geophysical modelling has identified strong responses at depth and adjacent to the Koval deposit
- Additional IP planned along the 5 kilometre “iron formation” and “Koval extension” trends eastward to the Kasagiminnis resource
- Drilling planned to test the Koval gold deposit near surface and at depth & nearby coincident IP/soil geochemical anomalies

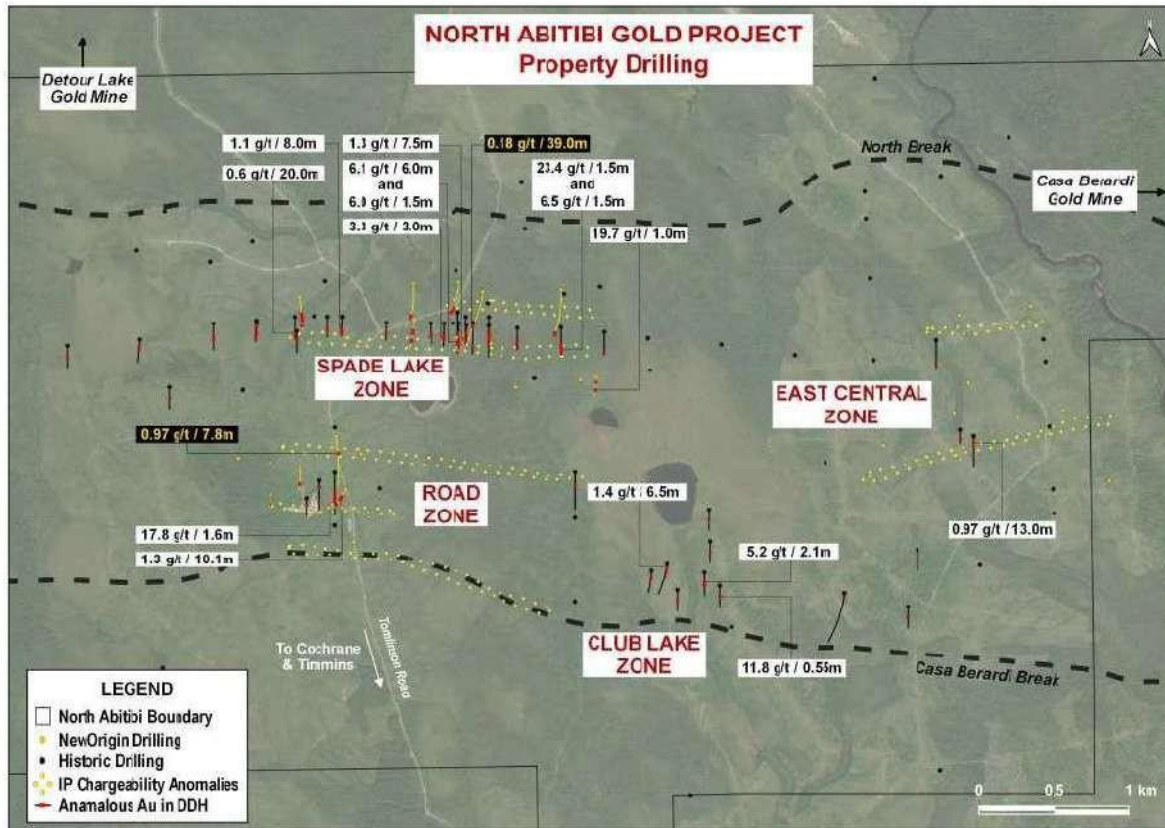
North Abitibi - Highest Level of Gold Endowment Within Ontario's Casa Berardi Trend



The “Casa Berardi” Trend (“CBT”)

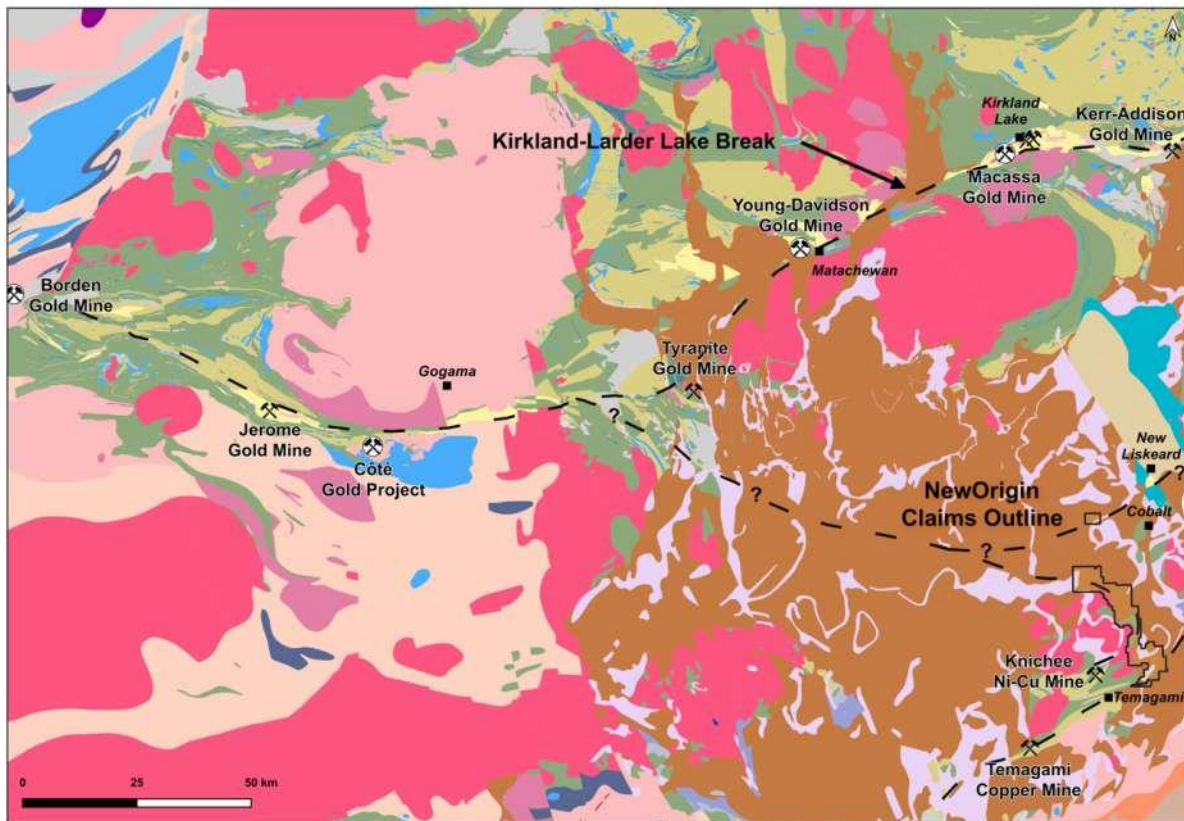
- A very productive gold and base metal-rich greenstone belt.
- Ore deposits don't stop at provincial boundaries.
- North Abitibi hosts prospective gold occurrences in the underexplored, western extension of the CBT.

North Abitibi – Significant Mineralized Gold Structures



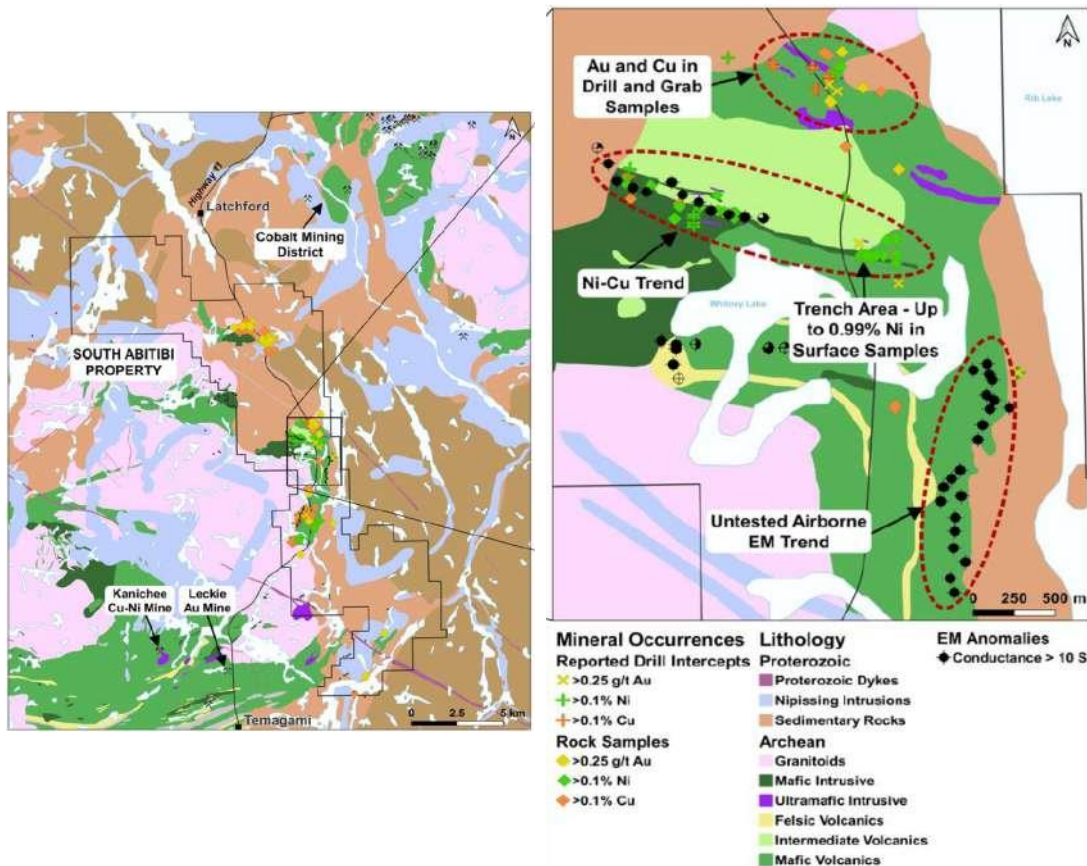
- 4,200 hectares, 10 km long property 40 km west of Hecla Mining's Casa Berardi Mine
- Previous shallow drilling identified 4 broad zones containing high-grade gold intercepts along significant strike lengths
- Gold is within a 2 km thick sequence of rocks traced for over 7 km
- 4 hole, 1,875 metre diamond drill program to test IP anomalies at depth completed in December 2021
- Drilling confirmed the prospectivity for high-grade discoveries within the known broad zones of gold mineralization

South Abitibi – Critical Minerals and Gold Occurrences



- South Abitibi overlies a complex and metal-rich geological environment
- Cobalt Plate rocks partially cover the underlying, property-wide prospective Abitibi Greenstone Belt
- “World-class” gold & base metal districts occur to the north in similar Abitibi rocks
- The Cobalt Ag-Co District is within the Cobalt plate immediately east-northeast of the property and Sudbury (Ni/Cu) to the southwest
- The properties also extend over a large segment of “Temiskaming Rift”, a deep crustal structure known to contain diamondiferous kimberlite

South Abitibi – Nickel/Copper Gold Targets



- NewOrigin holds a large land position in the Cobalt-Temagami region
- An exploration moratorium from 1970 until ~2000 left the property unexplored compared to the “northern” Abitibi
- Infrastructure and access is excellent due to its location central to 3 major mining districts
- NewOrigin has identified and conducted preliminary exploration at Au, Ni/Cu and Co/Ag occurrences
- A next phase of surface surveying and drilling is warranted at priority Ni/Cu and Au zones

Capital Structure

- Shares Outstanding: **56,891,681**
- Options: **2,235,000**
- Warrants: **5,200,000***
- Fully Diluted: **64,326,681 ***
- Market Cap: **~C\$2.3M**
- Cash & Equity+: **~C\$100k**

* as at February 28, 2024

+ Includes 58,935 common shares of O3 Mining Inc.

Proven Mine Finders



Bousquet #1 Mine

Board and Management

Robert Valliant, PhD., Chairman, Director

- Co-founded and listed Tri Origin on TSX, founded and listed TriAusMin on ASX and TSX. Former VP Exploration for LAC Minerals. Has lead discovery teams delineating over 10 M oz gold and substantial base metal resources at deposits in the Canadian Shield, the US and Australia.

Andrew Thomson, Director

- Currently President and CEO of Palamina Corp. Former President and CEO of Soltoro Ltd. acquired by Agnico Eagle Mines in June of 2015.

J.P. Janson, Director

- Former Managing Director National Wealth Management with Richardson GMP and CIBC Wood Gundy

Michael Farrant B.Comm., CPA, CA, CFO

- Over 26 years in the minerals industry formerly in senior positions with Kinross and Barrick as well as acting as CEO for junior resource companies.

Drill Discovery Phase in Established Mining Camps



- Portfolio of significant projects assembled over decades in Ontario's Abitibi and other productive greenstone belts where over 200 Moz of gold have already been produced
- NewOrigin's gold projects have the potential to host Tier 1 gold deposits
- Large "district-scale" property positions offer potential for multiple discoveries
- Focused on drill testing the historic Koval deposit and IP targets at Sky Lake in Pickle Lake District
- Advancing other projects through in-house exploration and joint venture partnerships

Exploration Plans for 2024



- Diamond drill at the Koval deposit, Sky Lake
- IP surveying eastward from Koval to target iron formation and resource extensions- Koval to Kasagiminnis
- North Abitibi- pursue corporate alliances followed by property-wide geophysical surveying
- South Abitibi advance both Au and Ni/Cu exploration through joint ventures
- Strengthen management and build sustainability through corporate relationships



For more information contact

explore@neworigingold.com

www.neworigingold.com

TSX-V: NEWO