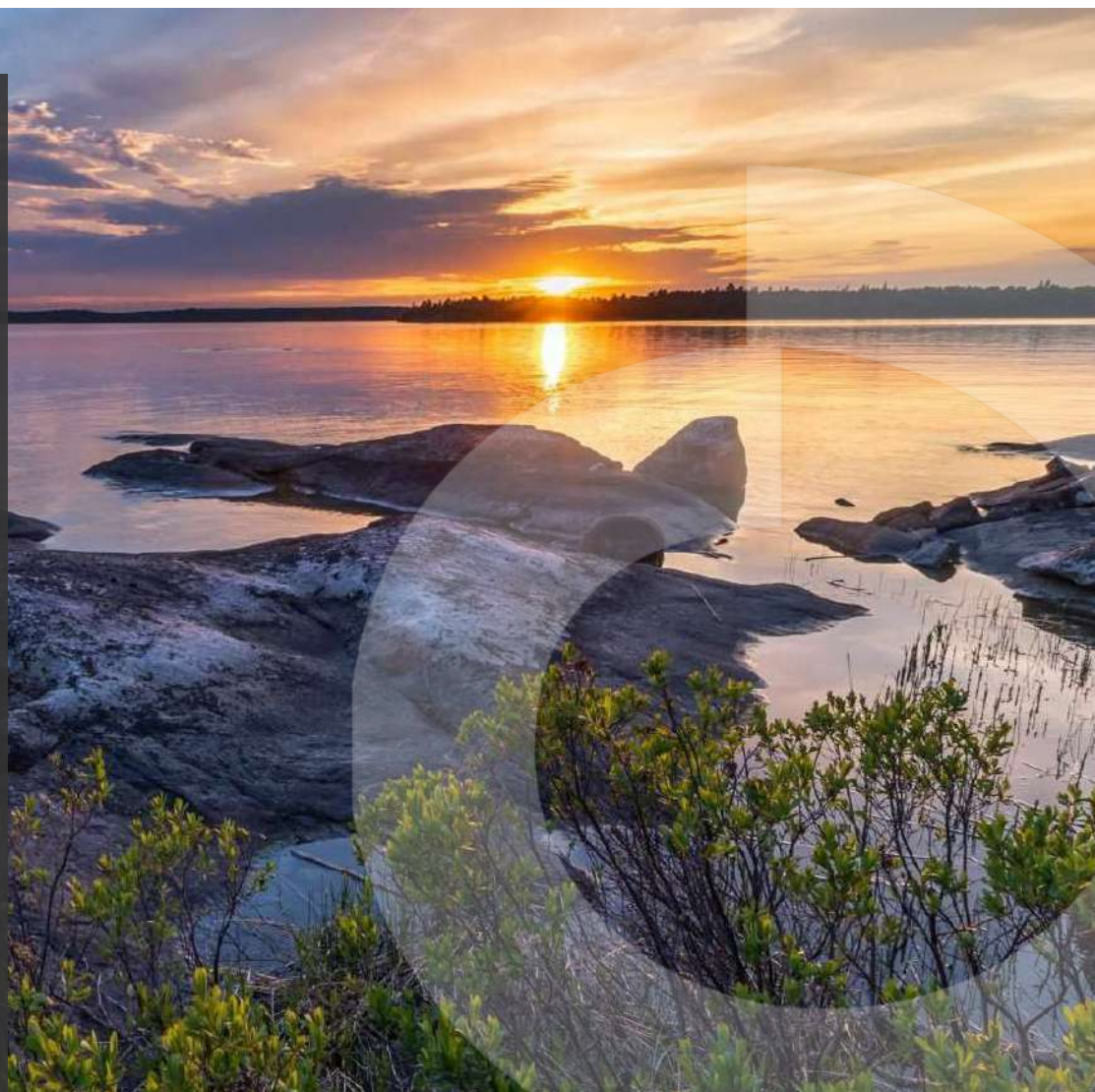




Advancing District Scale Gold Projects Through The Drill Discovery Phase

August 2023

TSX-V: NEWO



Forward Looking Statements

This presentation may contain "forward-looking information" (as defined in applicable Canadian securities legislation). Generally, these forward-looking statements can be identified by the use of forward-looking terminology such as "plans", "expects" or "does not expect", "is expected", "budget", "scheduled", "estimates", "forecasts", "intends", "anticipates" or "does not anticipate", or "believes", or variations of such words and phrases, or state that certain actions, events or results "may", "could", "would", "might" or "will be taken", "occur", "be achieved" or "has the potential to", and are based on expectations, estimates and projections considered to be reasonable by NewOrigin Gold as of the date of this presentation. Actual results and outcomes may differ materially from what is expressed or forecasted in these forward-looking statements. Such statements are qualified in their entirety by the inherent risks and uncertainties surrounding future expectations. Among those factors which could cause actual results to differ materially are the following: market conditions and other risk factors listed from time to time in our reports filed with Canadian securities regulators on SEDAR at www.sedar.com.

Information in this presentation has been furnished for your information only, is accurate at the time of posting, and may be superseded by more current information. Except as required by law, we do not undertake any obligation to update the information, whether as a result of new information, future events or otherwise.

Please refer to NewOrigin press releases and SEDAR filings for details on technical information and disclosures.

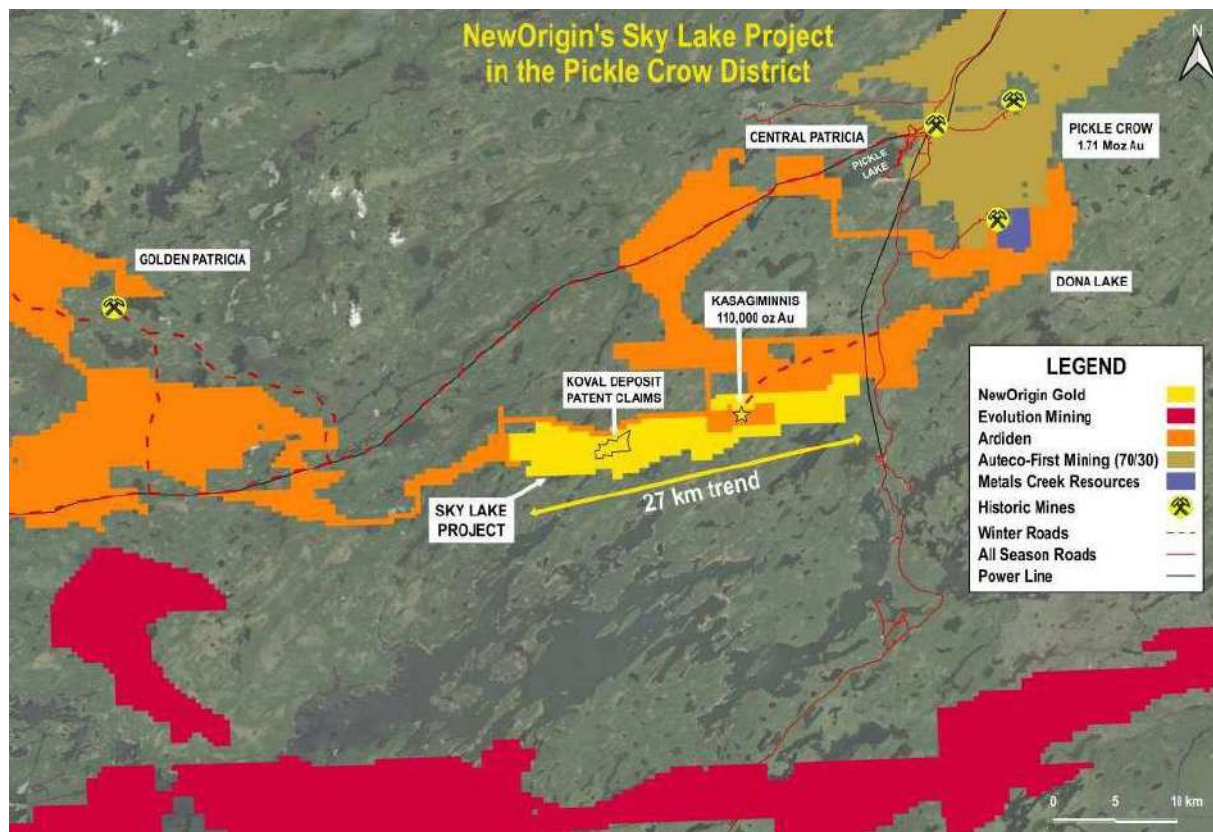
Significant Portfolio of Canadian Shield Gold Projects



Located in Ontario's Prolific Greenstone Belts

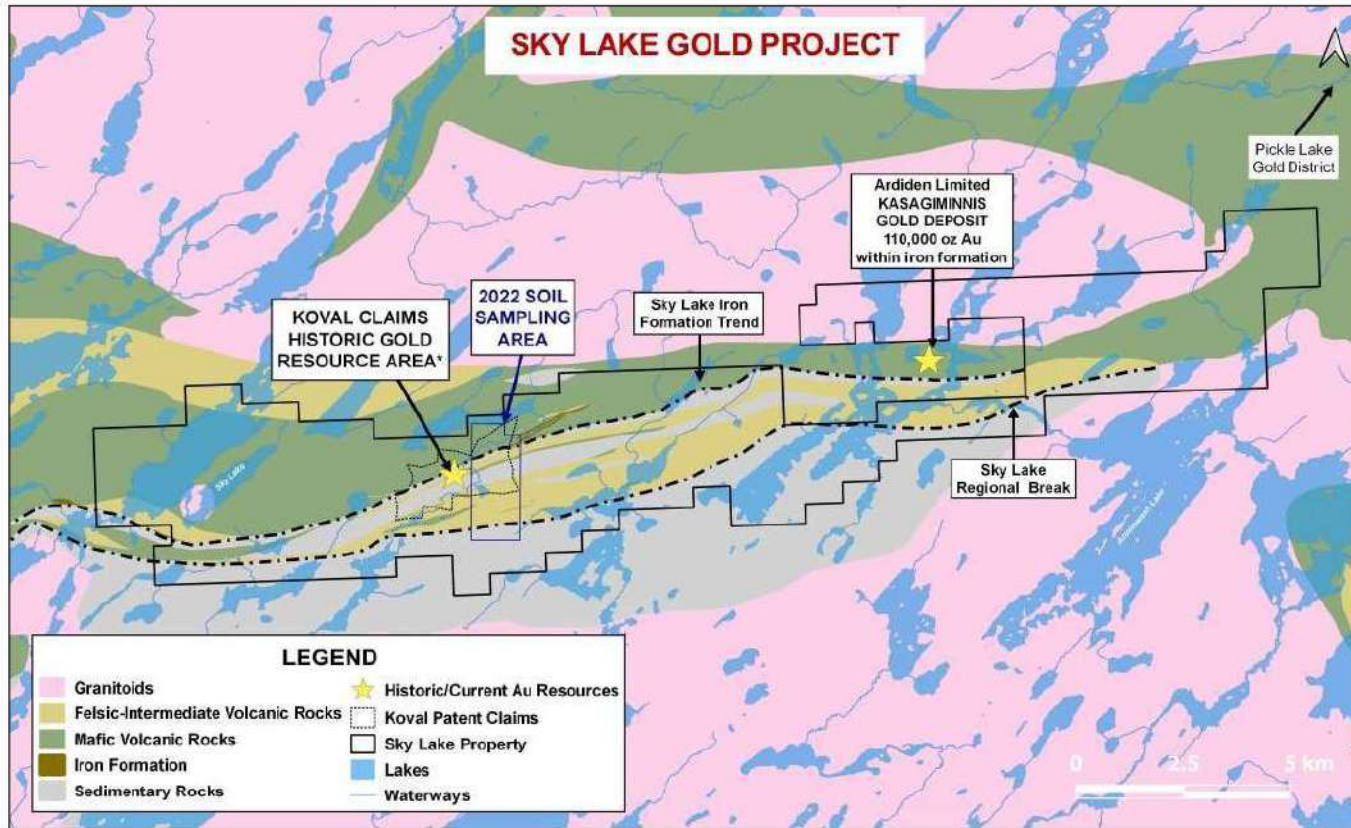
- **Sky Lake:** SW extension of the Pickle Lake Gold District, in the same geological terrain as the Red Lake Gold District
- **North Abitibi:** On the Casa Berardi trend in Ontario, 40 km west of the Casa Berardi mine
- **South Abitibi & Nipissing Cobalt:** Located in the southern portion of the Abitibi, prospective for gold, nickel/copper, cobalt/silver and diamonds

Sky Lake – Southwest Extension of Pickle Lake District



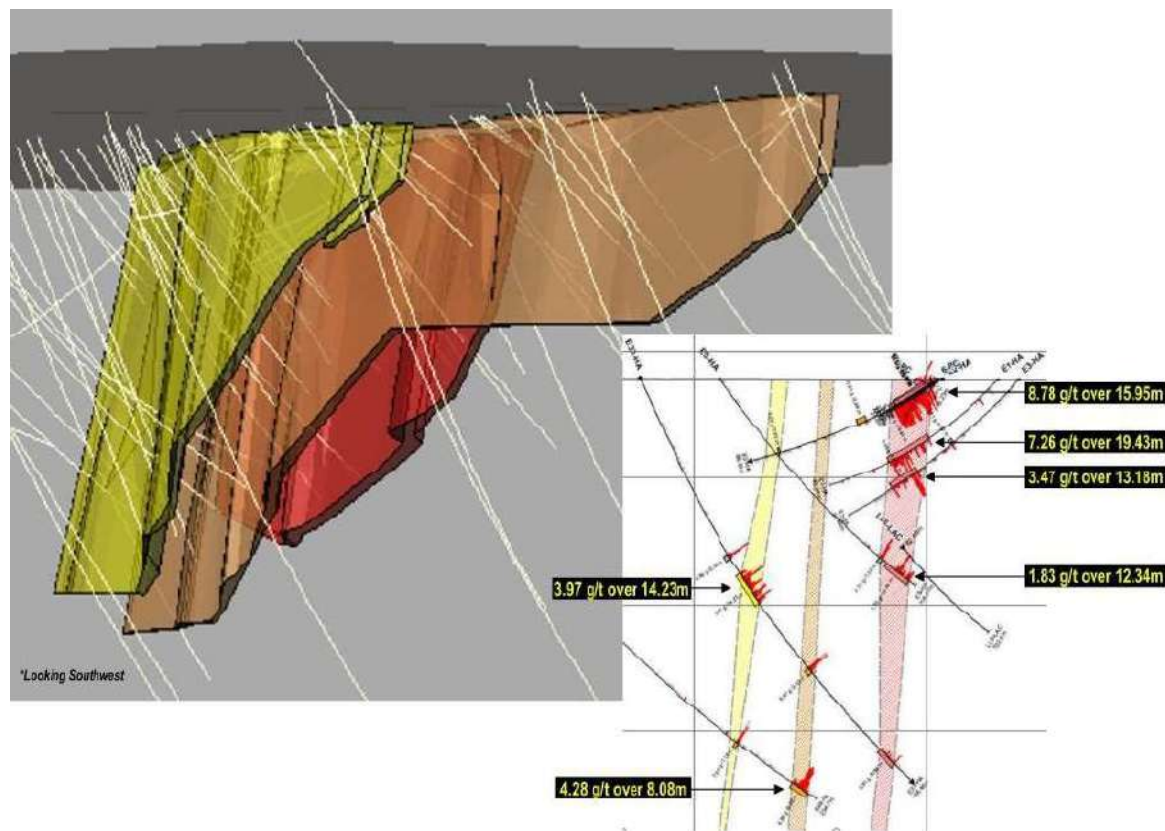
- 100% interest in 9,100 hectares, 27 km long gold trend
- 30 km southwest of the established mining community of Pickle Lake; commercial airport, heavy equipment, significant hydroelectric infrastructure along paved highway
- In January 2022, NewOrigin acquired 100% interest in the Koval patented mining claims from Barrick Gold
- Auteco advancing Pickle Crow mine into production, Arciden drilling to expand Au resource at Kasagiminnis, Evolution advancing exploration of greenstone belt to the south

Sky Lake – Historic High-Grade Gold Project



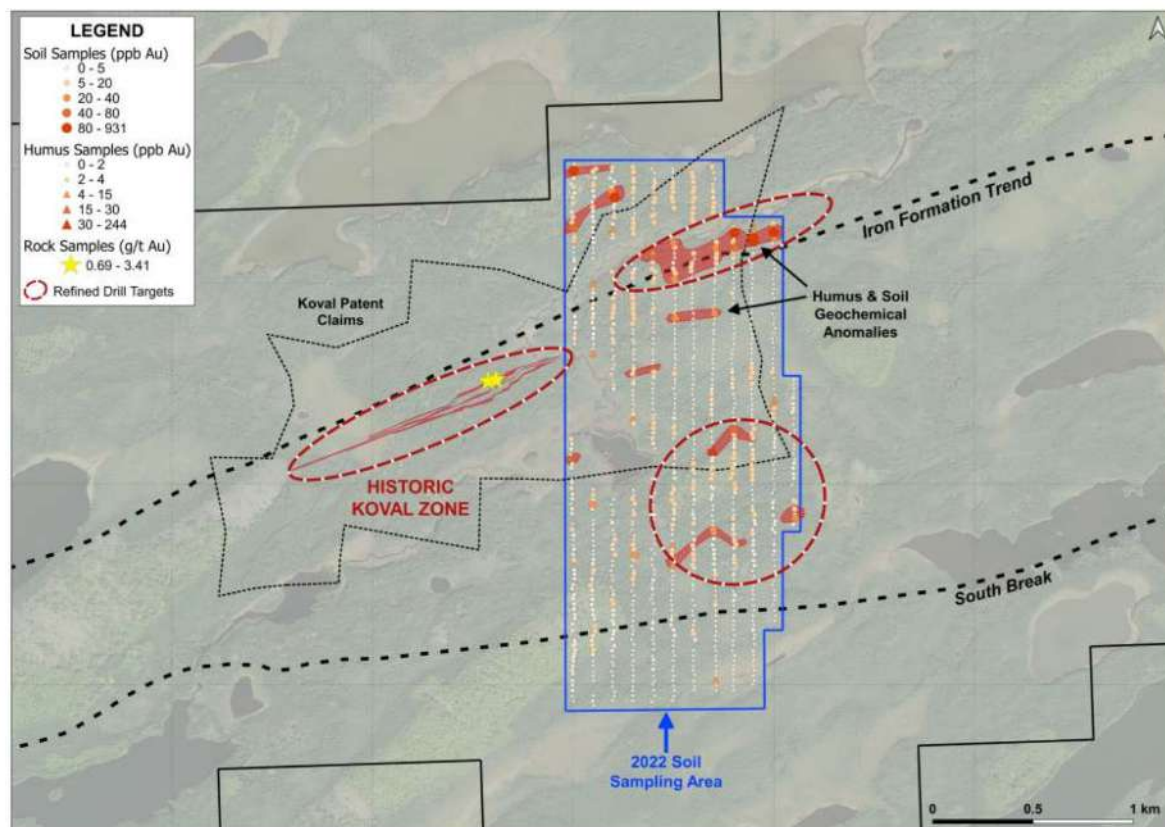
- Koval patented claims host a historic Au deposit discovered in 1950's
- Open at depth and in both directions along strike
- Koval historic Au deposit & iron formation targeted for drilling to establish initial Au resource
- Gold occurrences known along 15 km of trend
- Geophysical surveying and soil sampling programs have prioritized targets at and along trend from the Koval deposit

Sky Lake – Koval High Grade Gold Deposit



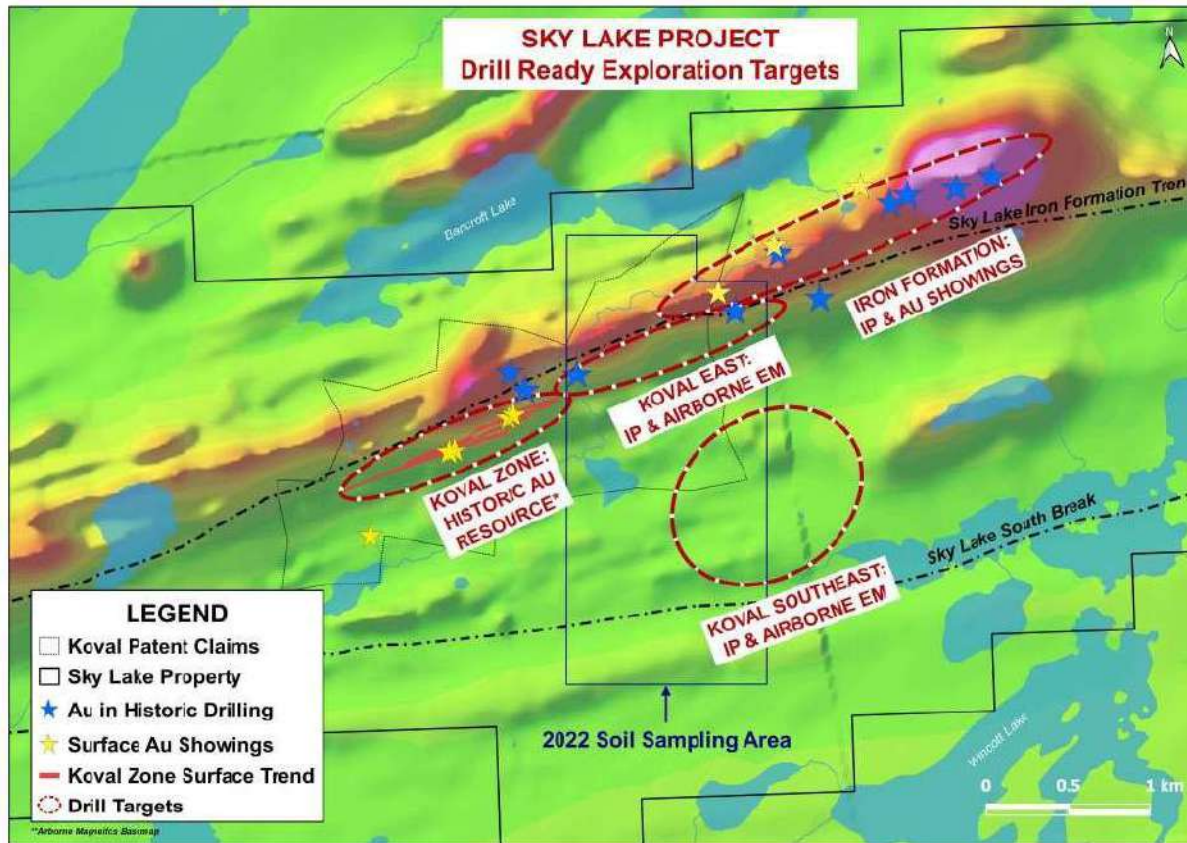
- Near surface drill intercepts at +3 g/tAu over + 10 metres
- No drill testing below 175m vertical depth
- NewOrigin modelling of 133 drill holes defines 3 sub-parallel zones over >1km strike length
- Induced Polarization targets remain untested

Sky Lake – Soil Sampling Humus Results



- NewOrigin has modelled a database of over 12,000 geochemical samples at the centre of the Sky Lake property
- In 2022, a total of 574 humus and 450 soil samples were taken along trend east of the Koval deposit
- Humus and soil samples containing anomalous gold complement each other well, delineating new prospective target areas to be integrated into upcoming drill programs

Sky Lake – Drill Targeting Koval & Eastern IP Zones

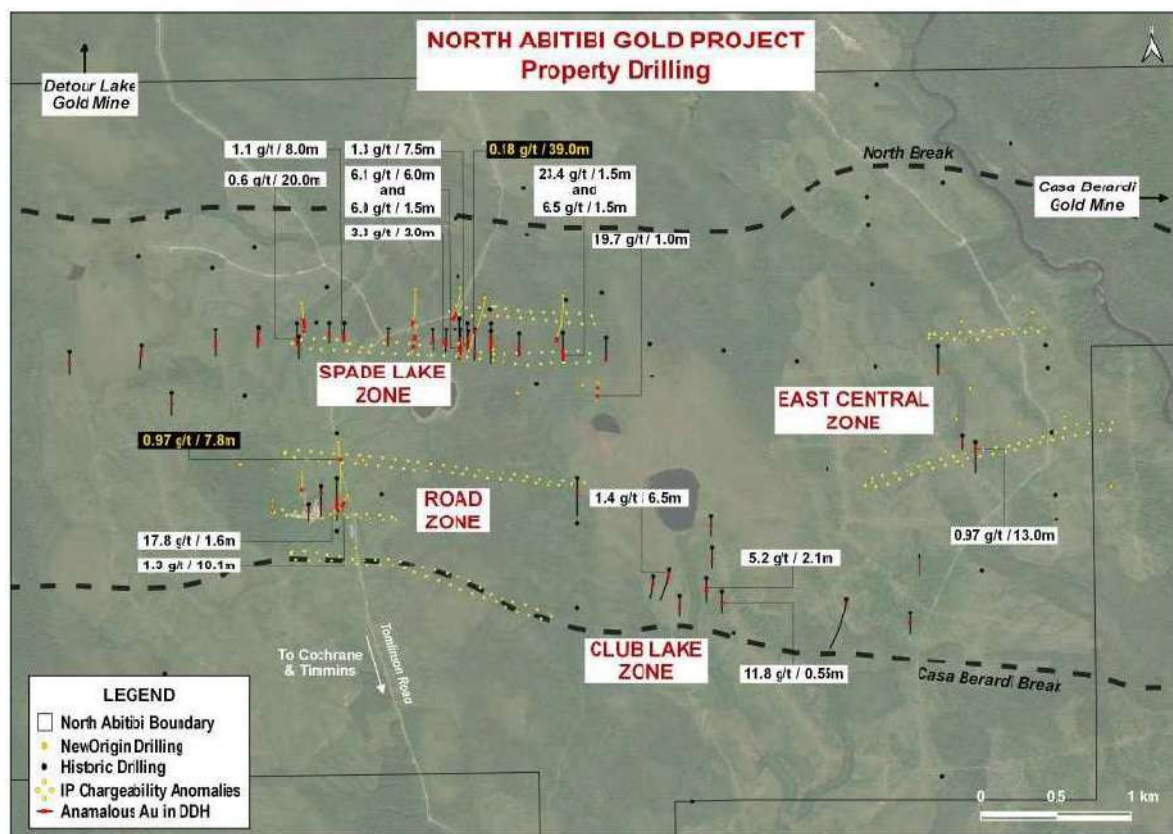


- Drill & exploration permit in place
- permit in place NewOrigin has completed 3 IP geophysical surveys including “deep looking” IP over the Koval deposit.
- Geophysical modelling has identified strong responses at depth and adjacent to the Koval deposit
- Additional IP planned along the 5 kilometre “iron formation” and “Koval extension” trends eastward to the Kasagiminnis resource
- Drilling planned to test the Koval gold deposit near surface and at depth, and coincident IP/soil geochemical anomalies east of Koval

Highest Level of Gold Endowment Within Ontario's Casa Berardi Trend

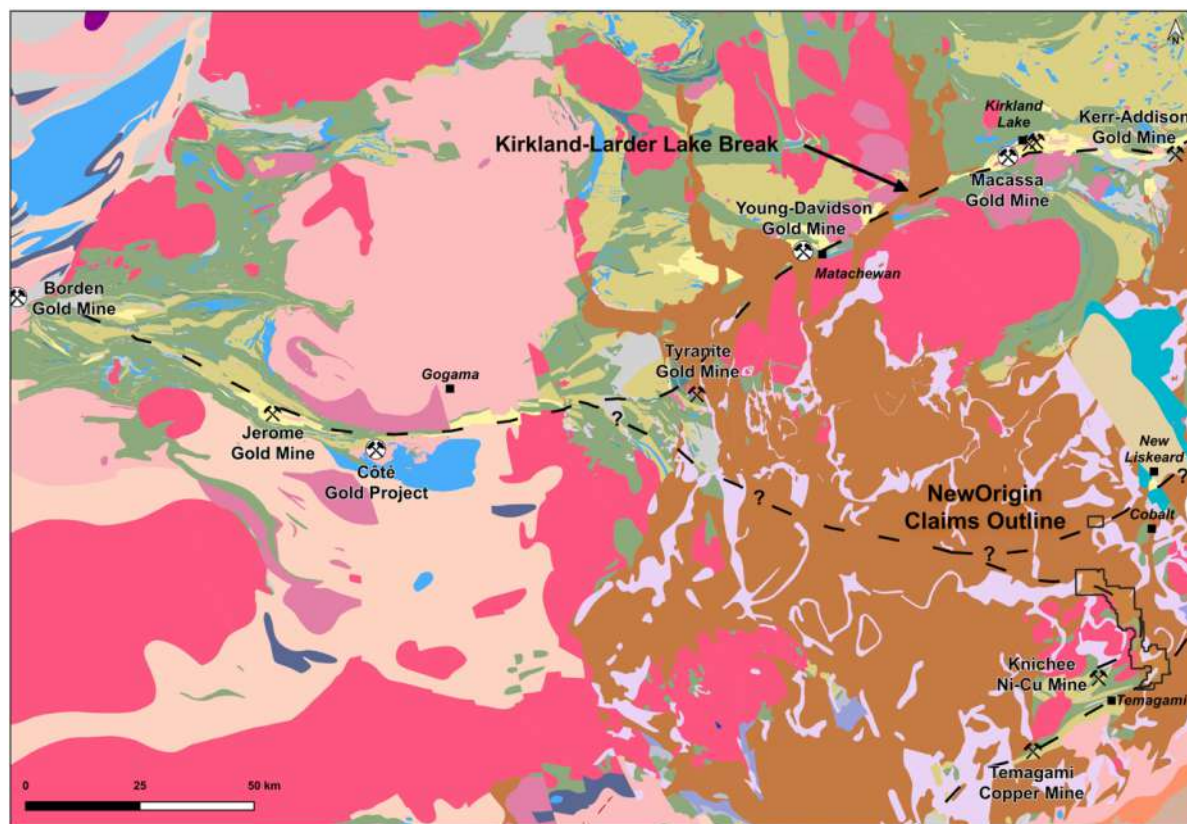


North Abitibi – Significant Mineralized Gold Structures



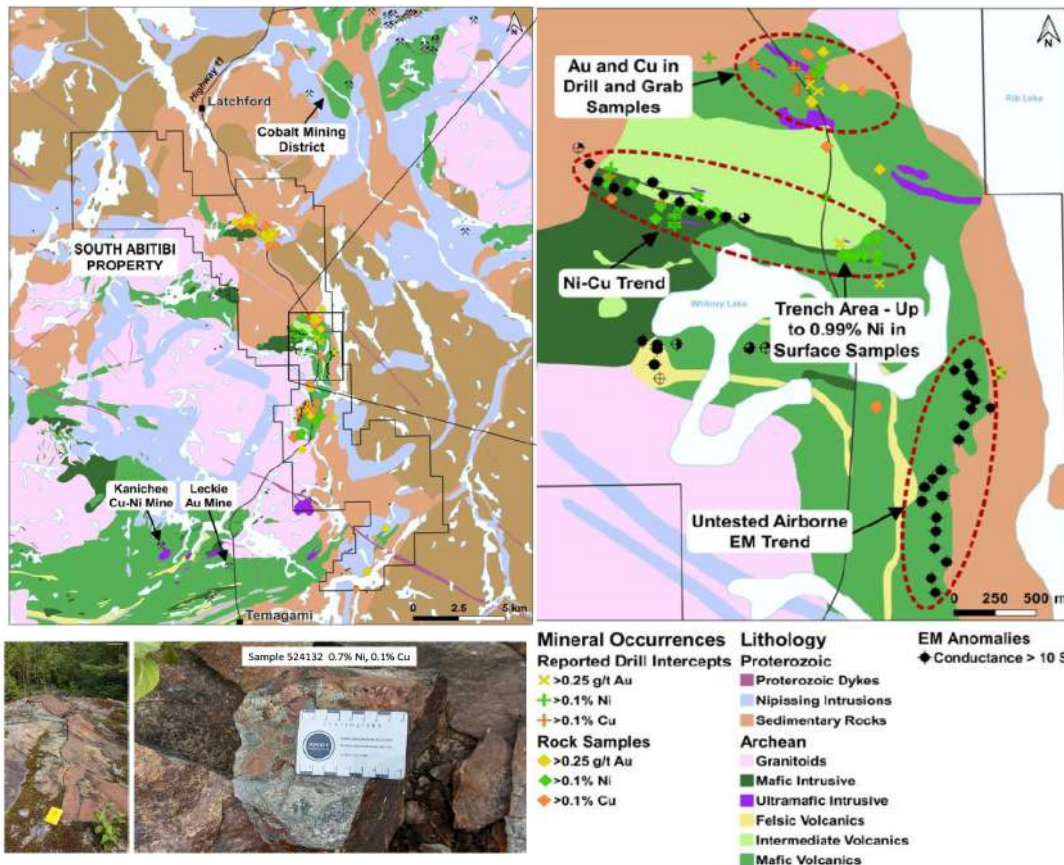
- 4,200 hectares, 10 km long property 40 km west of Hecla Mining's Casa Berardi Mine
- Previous shallow drilling identified 4 broad zones containing high-grade gold intercepts along significant strike lengths
- Gold is within a 2 km thick sequence of rocks traced for over 7 km
- 4 hole, 1,875 metre diamond drill program to test IP anomalies at depth completed in December 2021
- Drilling confirmed the prospectivity for high-grade discoveries within the known broad zones of gold mineralization

South Abitibi – Critical Minerals and Gold Occurrences



- South Abitibi overlies a complex and metal-rich geological environment
- Cobalt Plate rocks partially cover the underlying, property-wide prospective Abitibi Greenstone Belt
- “World-class” gold & base metal districts occur to the north in similar Abitibi rocks
- The Cobalt Ag-Co District is within the Cobalt plate immediately east-northeast of the property and Sudbury (Ni/Cu) to the southwest
- The properties also extend over a large segment of “Temiskaming Rift”, a deep crustal structure known to contain diamondiferous kimberlite

South Abitibi – Nickel/Copper Gold Targets



- NewOrigin holds one of the largest land positions in the Cobalt-Temagami region
- An exploration moratorium from 1970 until ~2000 left the property relatively unexplored compared to the “northern” Abitibi
- Infrastructure and access is excellent due to its location central to 3 major mining districts
- NewOrigin has identified and conducted preliminary exploration at Ni/Cu, Co/Ag and Au occurrences
- A next phase of surface surveying and drilling is warranted at priority Ni/Cu and Au zones

Capital Structure

- Shares Outstanding: **56,891,681**
- Options: **4,665,000**
- Warrants: **5,200,000***
- Fully Diluted: **66,756,681**
- Market Cap: **~C\$3M**
- Cash & Equity+: **~C\$75k**

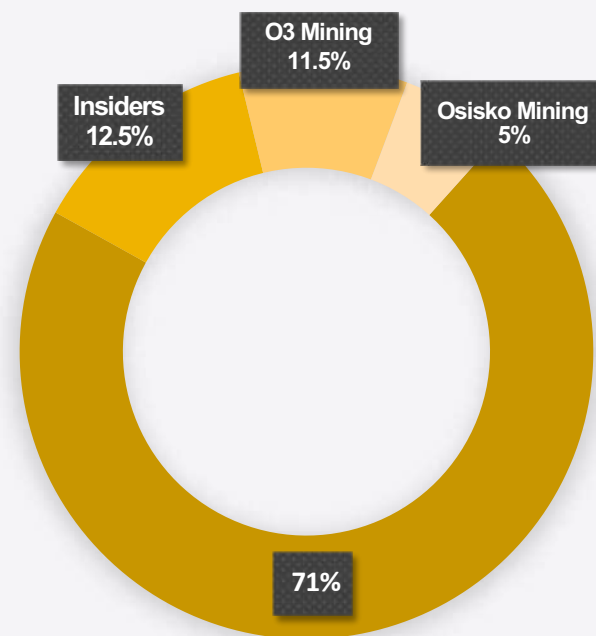
Significant Shareholders



O3 Mining

* \$0.10 exp. December 20, 2024

+ Includes 88,402 common shares of O3 Mining Inc.



Proven Mine Finders

Management

Andrew Thomson, CEO, Lead Director

- Currently President and CEO of Palamina Corp. Former President and CEO of Soltoro Ltd. acquired by Agnico Eagle Mines in June of 2015.

Michael Farrant B.Comm., CPA, CA, CFO

- Over 26 years in the minerals industry formerly in senior positions with Kinross and Barrick as well as acting as CEO for junior resource companies.

Zach Matheson, GIT

- Exploration geologist, formerly with Great Bear Resources Ltd. working on their Dixie Project.

Board of Directors

Robert Valliant, PhD., Chairman, Director

- Co-founded and listed Tri Origin on TSX, founded and listed TriAusMin on ASX and TSX. Former VP Exploration for LAC Minerals. Has lead discovery teams delineating over 10 M oz gold and substantial base metal resources at deposits in the Canadian Shield, the US and Australia.

J.P. Janson, Director

- Former Managing Director National Wealth Management with Richardson GMP and CIBC Wood Gundy

Drill Discovery Phase in Established Mining Camps



- Portfolio of significant projects assembled over decades in Ontario's Abitibi and other productive greenstone belts where over 200 Moz of gold have already been produced
- NewOrigin's gold projects have the potential to host Tier 1 gold deposits
- Large "district-scale" property positions offer potential for multiple discoveries
- Focused on drill testing the historic Koval deposit and IP targets at Sky Lake in Pickle Lake District
- Advancing other projects through in-house exploration and joint venture partnerships



For more information contact

Andrew Thomson
CEO
at@neworigingold.com

www.neworigingold.com
TSX-V: NEWO