



www.neworigingold.com

TSX.V :NEWO

GOLD EXPLORATION IN THE CANADIAN SHIELD

The NewO team has a broad industry background encompassing capital markets, ore deposit discovery, mine development & financing as well as social & environmental responsibility

TRADING

52 wk.High/Low: \$0.065/\$0.025
Market Cap: \$2.0M

CAPITAL STRUCTURE

Issued: 56.9M
Options: 2.5M
Warrants: Fully 5.2M
Diluted: 64.6M

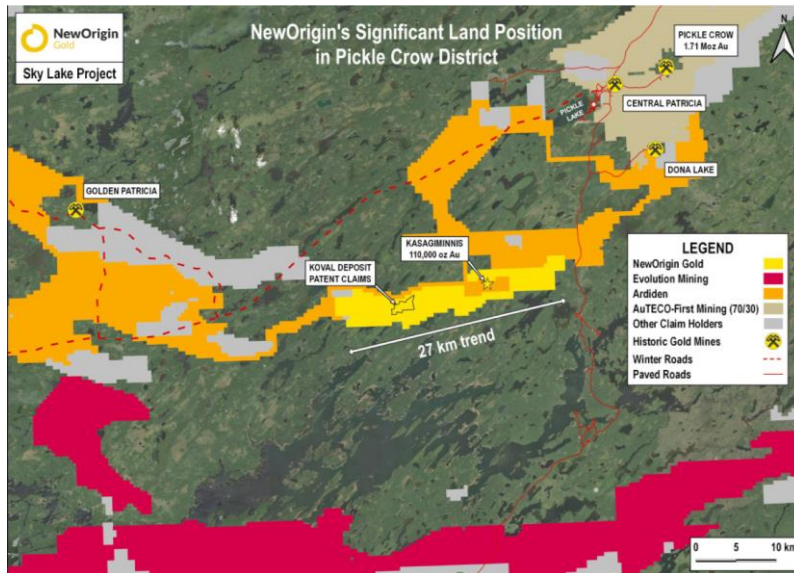
DIRECTORS & KEY MANAGEMENT

Robert Valliant, PhD., Chairman
Andrew Thomson, Director
J.P. Janson, Director
Michael Farrant, C.F.O.

ADVISORY BOARD

David Farquharson, Community Engagement
Jerry Blackwell, Geological
Glenn Nolan, Community Engagement/Environment
Mark Petersen, Technical-QP

SKY LAKE—READY TO DRILL—SUMMER 2024

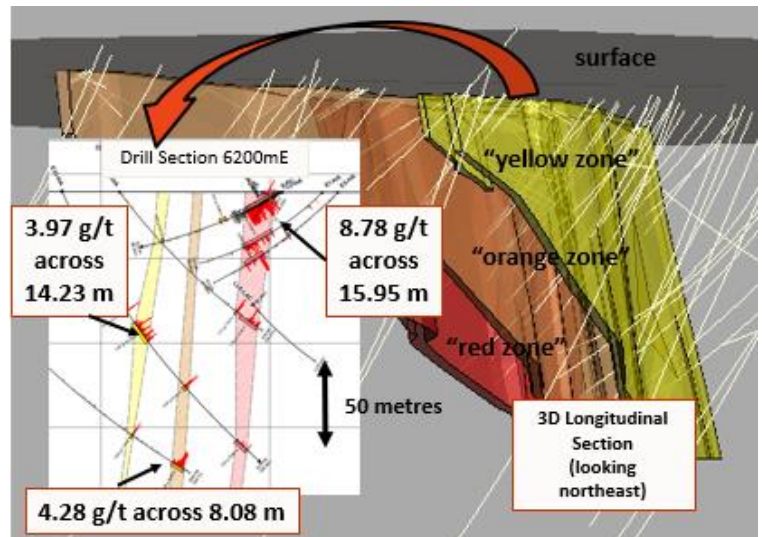


KEY FACTS

- ✓ 100%-owned, 27 km long property cored by patent claims hosting the Koval deposit – a small, historical gold resource (non-compliant with NI43-101).
- ✓ Nearby infrastructure.
- ✓ Southwest of Pickle Lake Gold Mining District- east of Golden Patricia Mine & west of Dona Lake Mine.
- ✓ Discovered in the 1950's, examined in the 1980's- no drilling since then.
- ✓ Historical drill intersections of up to 8.78 g/t Au over 15.95 metres within 100 metres of surface.
- ✓ NewOrigin has defined priority geochemical & geophysical anomalies at Koval & at nearby iron formation trend.

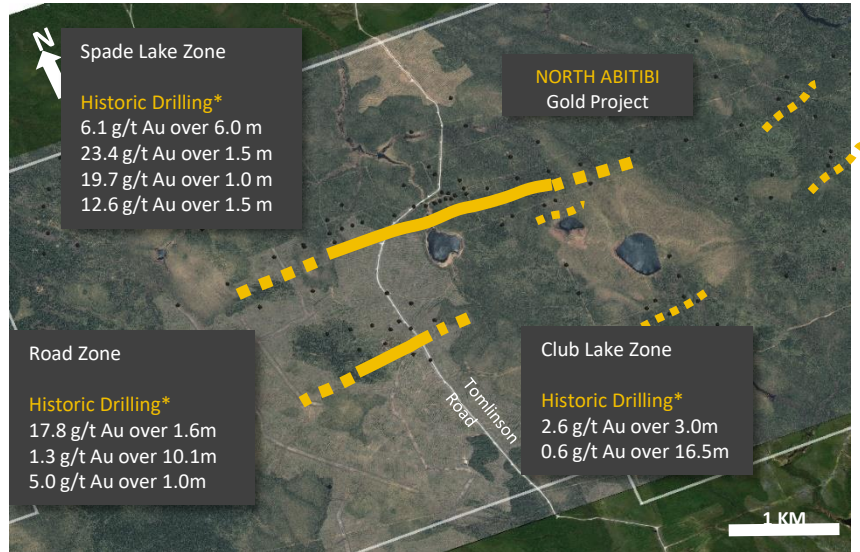
Drill program planned - Summer 2024 to test the Koval deposit and nearby priority targets.

KOVAL- A PARTIALLY DELINEATED GOLD DEPOSIT



SKYLAKE - EXPLORATION OPPORTUNITY - A TIER 1 GOLD DEPOSIT

NORTHABITIBI PROJECT – GOLD ZONES TRACED FOR OVER 3 KILOMETRES



KEY FACTS

- ✓ 10km long property 150km north of Timmins along the extension of the Casa Berardi/Joutel gold belt of Quebec.
- ✓ Road access & nearby infrastructure - Detour Lake Gold Mine 50km north & Casa Berardi Gold Mine 40km east.
- ✓ 3 gold zones identified with collective length of over 3 km.
- ✓ 143 drill holes mostly confined to intersections within 100m of surface
- ✓ Historical intersections up to 6.1 g/t Au across 6.0 metres & numerous +10 g/t intersections across +1.0 metre.

SOUTH ABITIBI PROJECT – GOLD & CRITICAL MINERALS OCCURRENCES

KEY FACTS

- ✓ Located between the world-class Sudbury, Cobalt & Kirkland Lake Mining Districts- excellent infrastructure
- ✓ Along the covered & underexplored southern margin of the Abitibi Greenstone Belt
- ✓ Extensive areas of gold-rich surface samples within small exposures of the otherwise covered Abitibi. .
- ✓ Nickel, copper & cobalt massive sulphide with surface samples of up to 1.0% Ni and undrilled “VTEM” anomalies traced for 5km.

